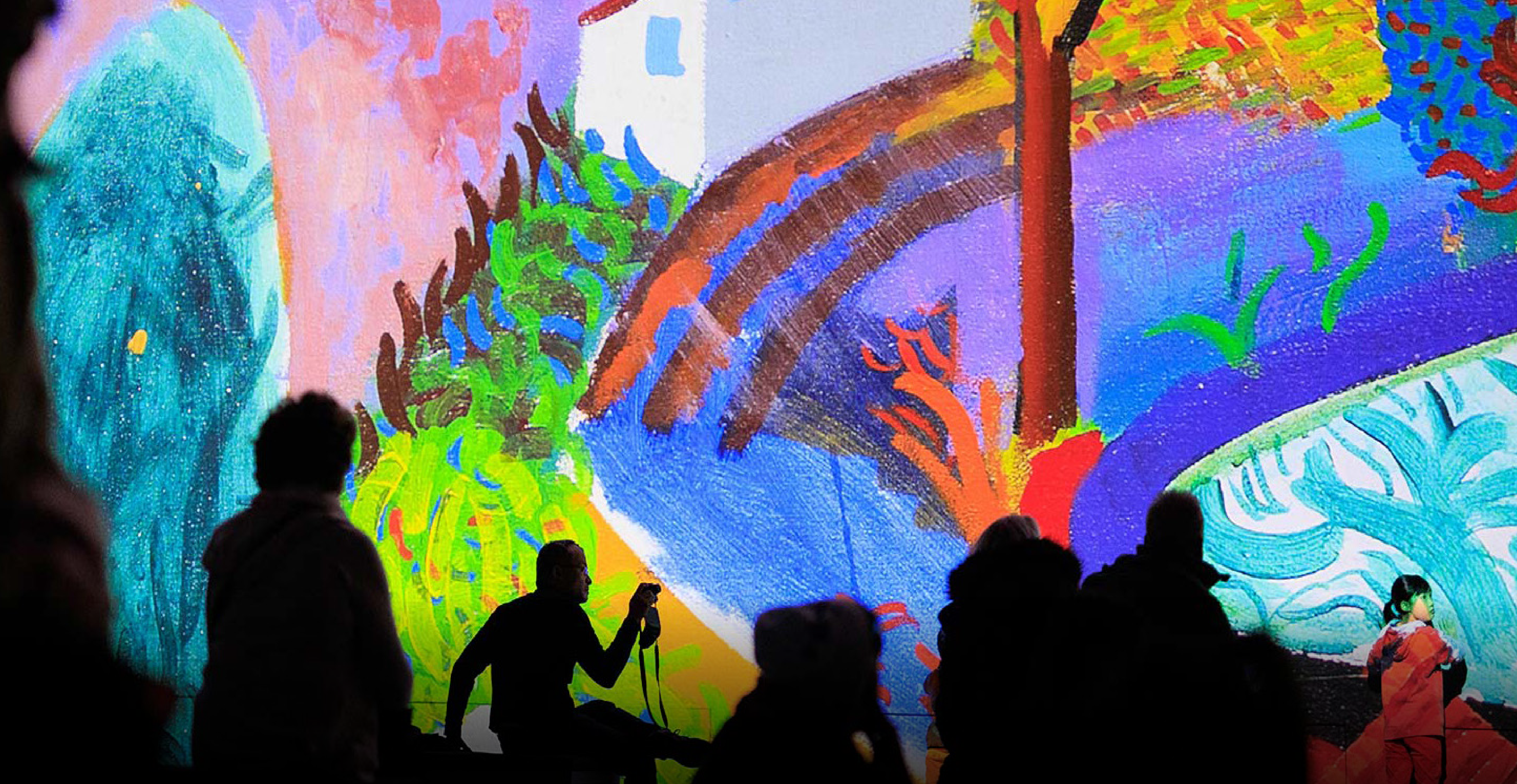


LIGHTROOM

*VENUE
HIRE*



LIMITLESS CANVAS | LASTING IMPRESSIONS

LIMITLESS CANVAS | LASTING IMPRESSIONS

EVENTS WHERE CREATIVITY TAKES CENTRE STAGE

Located in central London just a few minutes' walk from King's Cross St Pancras, Lightroom is a show-stopping 340-capacity venue where art, storytelling, and cutting-edge technology meet. With its state-of-the-art 360 degree, 4K resolution immersive projection capabilities and flexible layout, Lightroom transforms any occasion to an unforgettable experience.

Whether you're planning a brand takeover or looking for a unique destination for your next reception or dinner, Lightroom offers a limitless canvas to entertain your guests.

Trusted by leading agents and iconic global brands including Hugo Boss, Paramount, Spotify, Warner Music, Vogue and Sony Music, Lightroom delivers a level of service and creative inspiration that sets it apart.

The venue includes a stylish foyer, café bar, and retail area, ensuring guests enjoy thoughtful, high-quality hospitality from arrival to departure.

With excellent transport links and surrounded by Coal Drops Yard's vibrant mix of dining, shopping, and culture, Lightroom combines logistical ease with a bold, immersive environment that leaves a lasting impression.


Host your next brand activation, client event, or private function in a setting trusted by industry leaders and designed to inspire.

Please reach out to us at: [hires@lightroom.uk](mailto: hires@lightroom.uk)

OUR SHOWS SO FAR

LIGHTROOM

★★★★★ THE INDEPENDENT ★★★★★ THE OBSERVER ★★★★★ THE REVIEWS HUB
★★★★★ "A TRIUMPH" ★★★★★
THE TIMES VOGUE THE TELEGRAPH

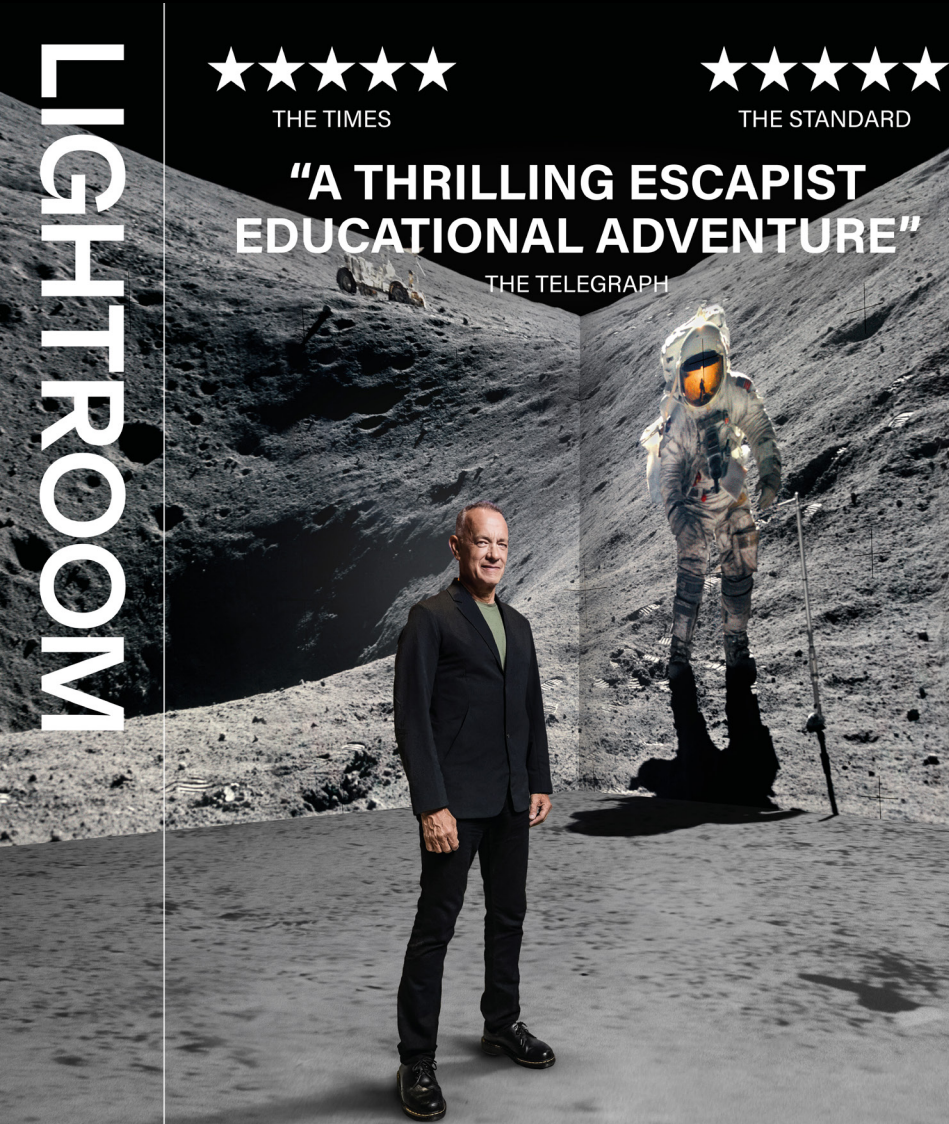


DAVID HOCKNEY
BIGGER & CLOSER (not smaller & further away)

SHOWING UNTIL 1 JUNE GETTING HERE KING'S CROSS ☺ ☹ BOOK NOW LIGHTROOM.UK

LIGHTROOM

★★★★★ THE TIMES ★★★★★ THE STANDARD
"A THRILLING ESCAPIST EDUCATIONAL ADVENTURE"
THE TELEGRAPH



THE MOONWALKERS
A JOURNEY WITH TOM HANKS

SHOWING UNTIL 1 JUNE GETTING HERE KING'S CROSS ☺ ☹ BOOK NOW LIGHTROOM.UK

LIGHTROOM

★★★★★ THE TIMES ★★★★★ REVIEWS HUB ★★★★★ THE TELEGRAPH
"AN INCREDIBLE EXPERIENCE"
THE NUDGE

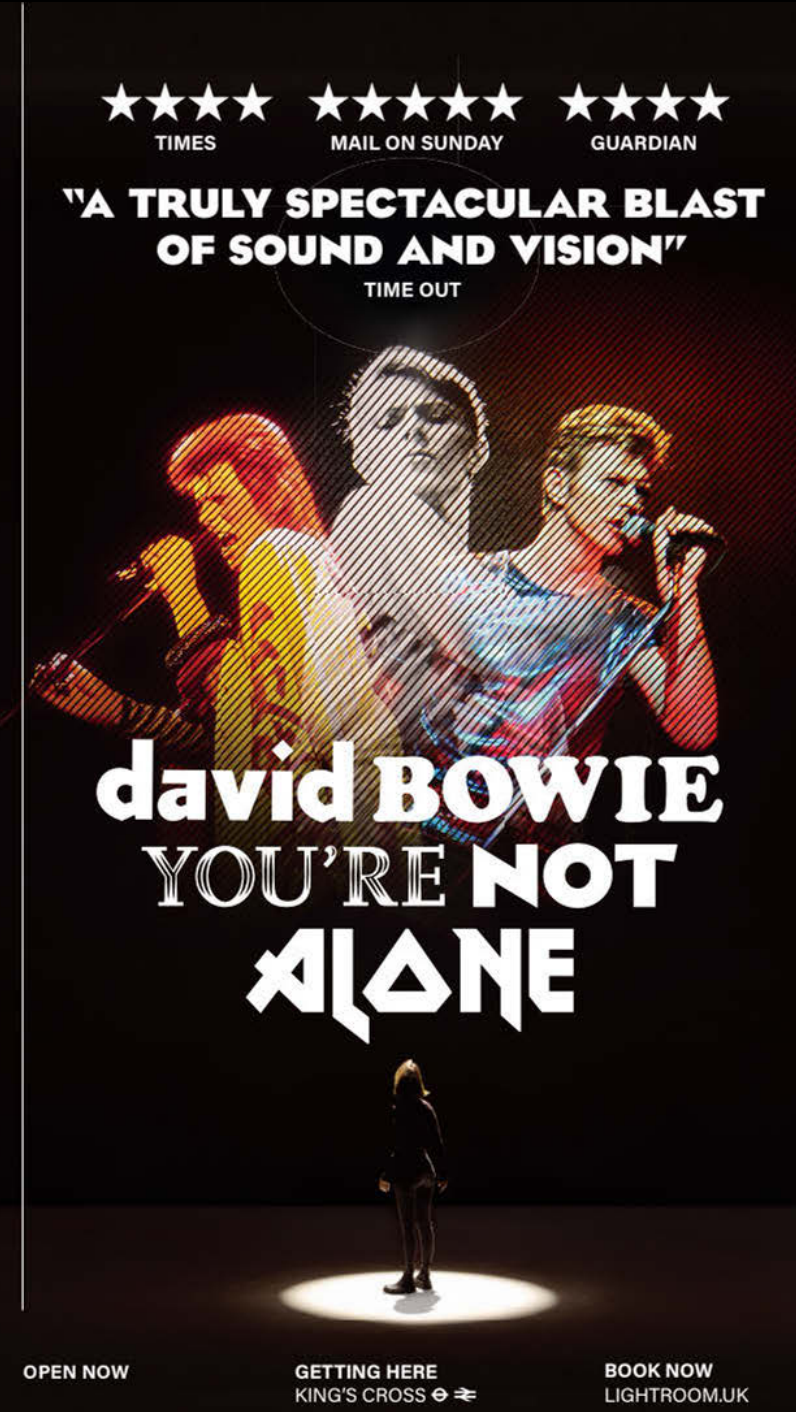


VOGUE
INVENTING THE RUNWAY

SHOWING UNTIL 1 JUNE GETTING HERE KING'S CROSS ☺ ☹ BOOK NOW LIGHTROOM.UK

LIGHTROOM

★★★★★ TIMES ★★★★★ MAIL ON SUNDAY ★★★★★ GUARDIAN
"A TRULY SPECTACULAR BLAST OF SOUND AND VISION"
TIME OUT



DAVID BOWIE
YOU'RE NOT ALONE

OPEN NOW GETTING HERE KING'S CROSS ☺ ☹ BOOK NOW LIGHTROOM.UK

SHOWSPACE

Capacity: Up to 340 guests



LOWER VIEWING GALLERY, UPPER VIEWING GALLERY, GUEST JOURNEY

Upper Viewing Gallery Capacity: Up to 36 guests



Guest Journey



Upper Viewing Gallery



Lower Viewing Gallery

BAR AND CAFÉ

Capacity: Up to 250 guests



OUTSIDE VENUE, TERRACE



BESPOKE HIRE

Album Launches & Listening Events

Film & TV Premieres

Exhibition Halls & Conferences

Brand & Media Events

Presentations & Awards Ceremonies

Private Dinners & Receptions

Photo & Music Video Shoots

Live Entertainment

Private Viewing of Lightroom Shows



ALBUM LAUNCHES & LISTENING EVENTS

ED SHEERAN 'PLAY' ALBUM CASE STUDY

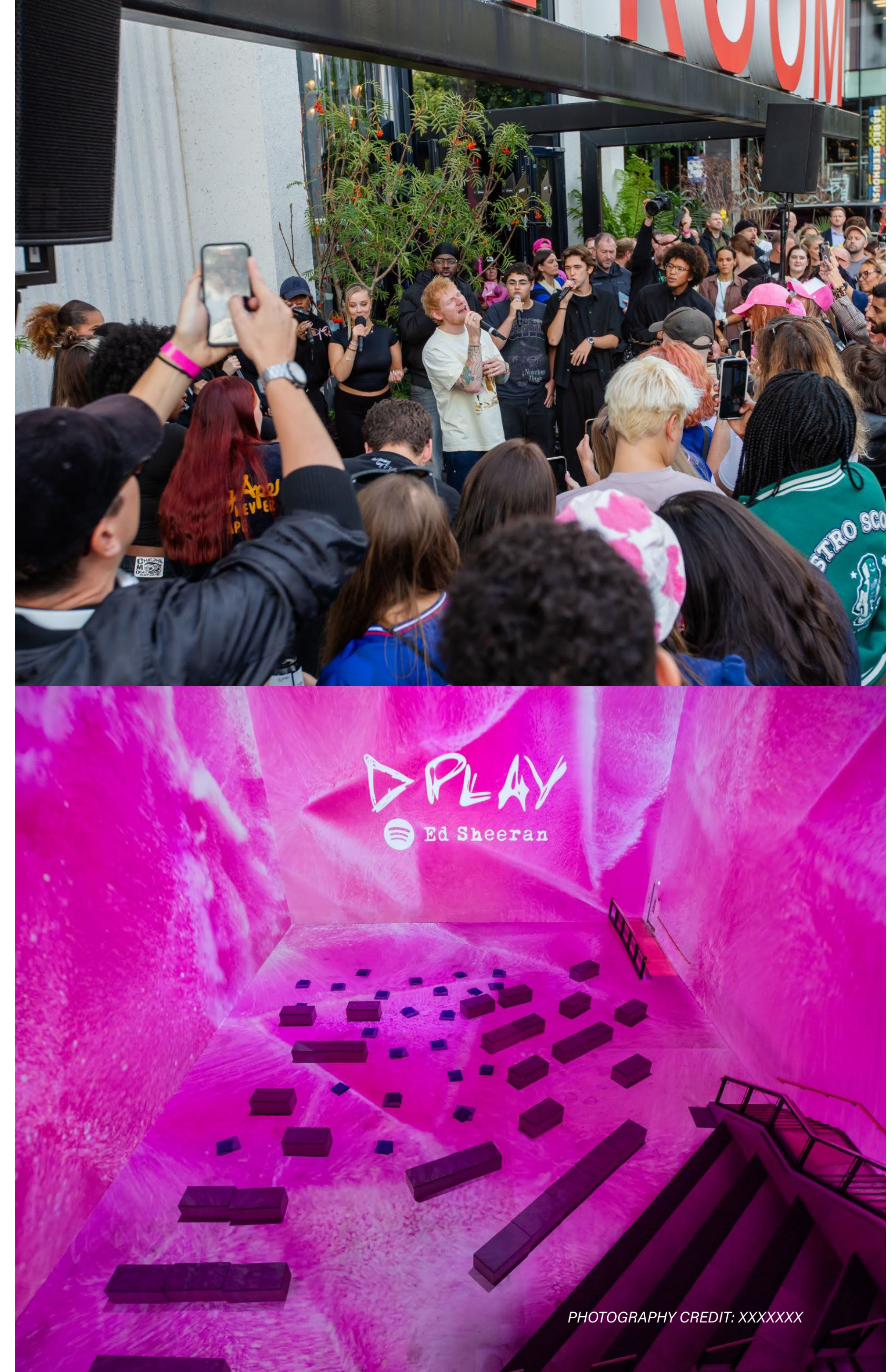
Brief

Spotify, in collaboration with Ed Sheeran and Atlantic Records, set out to create a one-of-a-kind album listening party to launch *Play*. The event invited Spotify's top UK listeners to experience the album in an unforgettable, immersive way.

Details

The show offered fans an exclusive opportunity to step inside Ed's creative process. During a Q&A at the end of the first show, Ed also shared personal insights into how the songs were written and produced, before fans heard the full album in an intimate, immersive setting.

To deepen the connection, Ed's studio space was re-created within Lightroom's shop area, giving fans a behind-the-scenes look. Vinyl branding extended the experience outside the venue, building anticipation before guests entered for the 60-minute show.



PREMIERE

STAR WARS: ANDOR SEASON 2 CASE STUDY

Brief

To celebrate the launch of *Star Wars: Andor* Season 2, Disney asked us to create an immersive London premiere event that showcased key moments from the upcoming series while giving press, talent, and fans a memorable experience.

Details

Guests were welcomed with a branded step-and-repeat entrance, complete with a media wall along the lower viewing gallery, where cast members moved through interviews and photo opportunities. Simultaneously, a drinks and canapés reception curated by Ottolenghi set the tone for the evening.

The event included the exclusive trailer reveal and a first look at the opening 15 minutes of Episode 1. This was followed by a live Q&A and panel discussion with the cast, director, and producers, giving attendees insider insights into the making of the series. The evening concluded with networking and press opportunities, wrapping up a cinematic launch that blended spectacle with intimate access to the talent behind the show.



BRAND ACTIVATION

HUGO BOSS: BOSS ONE CASE STUDY

Brief

Premier partnered with Hugo Boss to deliver a full venue takeover at Lightroom, transforming the space into a distinctive New York-style apartment. The activation brought to life the *BOSS ONE* campaign, fronted by Sir David Beckham, with a bold, immersive brand environment.

Details

Guests entered the venue via a red carpet with step-and-repeat which was live streamed and hosted by broadcaster Vick Hope. Lightroom's signage was replaced entirely with Hugo Boss branding and A-list attendees were welcomed into the foyer - reimagined as a New York apartment - with an open bar featuring silver-service waiters and bartenders.

The experience then flowed into the showspace, which was transformed into a New York cityscape featuring a central bar, lightboxes and live vox pops. Campaign visuals were unveiled across the screens, celebrating the *BOSS ONE* launch and the evening ended with an after party featuring DJ sets from Mark Ronson and Honey Dijon.



EXHIBITION HALL

SONY ENTERTAINMENT TECHNOLOGY SHOWCASE 2024 CASE STUDY

Brief

Sony transformed Lightroom into an exhibition hall to host their first global entertainment technology showcase in Europe. The aim was to bring together the wider Sony family across music, technology, film and gaming, with bespoke demo booths and interactive displays.

Details

The three-day event welcomed employees from around the world through pre-booked entry slots, ensuring a seamless flow of attendees. The foyer was left as café-style reception area, while the retail shop was cleared to allow full focus on the exhibition space. The showplace was transformed with booths and interactive product displays.



AWARD CEREMONY

WOMEN'S SUPER LEAGUE CASE STUDY

Brief

The Women's Super League hosted its annual awards ceremony at Lightroom, celebrating the league's top players in an immersive and memorable setting.

Details

The show space was transformed into a dramatic football pitch environment, creating a unique stage for the awards presentation. The one-day hire included the ceremony itself, followed by a drinks reception and afterparty. Guests enjoyed a menu of canapés and bowl food curated by Ottolenghi, for an elevated hospitality experience.



LIVE ENTERTAINMENT

YUJA WANG CASE STUDY

Brief

As part of the Lightroom Live concert series, Lightroom produced a unique collaboration between acclaimed pianist Yuja Wang and artist David Hockney. A long-time admirer of Hockney's work, Yuja performed a live concert responding directly to the themes and visuals of his Lightroom show.

Details

The performance immersed the audience in David Hockney's art, with Yuja Wang's playing accompanied by live projections on the vast screens, capturing and amplifying the concert in real time. This created a unique fusion of classical music and contemporary art.

See the event come to life at this [link](#).



PHOTOSHOOT

THE BRIDGE CASE STUDY

Brief

The Bridge Theatre used Lightroom's show space to capture the lead image for the *A Midsummer Night's Dream* production poster.

The aim was to combine theatrical creativity with Lightroom's projection technology to create a striking visual identity for the campaign.

Details

The shoot made use of Lightroom's large-scale immersive projections, incorporating imagery from *The Moonwalkers* show to create a dramatic backdrop.



PRIVATE VIEW + DINNER

CASE STUDY

Brief

A corporate client hosted a private hire at Lightroom, combining an exclusive viewing of one of the Lightroom shows — in this case *David Hockney's Bigger & Closer (not smaller & further away)* — with a bespoke dinner experience.

Details

The evening began with a drinks and canapés reception, followed by a private one-hour show screening. Guests were then welcomed into a specially designed dining space. The event seamlessly blended immersive art, hospitality and networking, delivering a memorable corporate experience.



VENUE INFORMATION

Venue Facilities

Natural daylight throughout public areas
Outdoor terrace
High-spec AV and audio facilities
360 degree, 4K resolution
On-site WiFi
Dancing permitted
Late night license

Accessibility

The venue is fully accessible for guests with additional needs. Step-free access, accessible toilets and assistance options are available throughout.

Sustainability

Lightroom is committed to responsible venue management and energy-efficient production.



EVENT PARTNERS

CATERING

OTTOLENGHI

We are proud to partner with Ottolenghi to bring outstanding food and hospitality to your event.

Known for bold flavours, vibrant presentation, and world-class quality, Ottolenghi brings a distinctive culinary flair to every occasion — from elegant canapés and seated dinners to seasonal sharing menus designed to impress.

Ottolenghi also creates fully bespoke menus, with food tailored to your vision and event.



EVENT PARTNERS *CATERING*



JIMMY GARCIA
CATERING

We are also proud to partner with Jimmy Garcia. Known for creating memorable dining experiences across London, Jimmy Garcia Catering combines exceptional seasonal ingredients, creative menus and impeccable service to deliver events that are as distinctive as the venue itself. From elegant canapés and drinks receptions to immersive dining experiences and bespoke seated dinners, every menu is tailored to your vision and designed to leave a lasting impression.



RATE CARD

VENUE HIRE

Not all charges apply; dependent on requirements of the event

Monday - Friday

Starting from

Daytime Dry Hire (9am - 6pm)	£40,000	
Evening Dry Hire - Reception (6pm-11pm)	£15,000	<i>Inclusive of get out</i>
Evening Dry Hire - Dinner (6pm-11pm)	£20,000	<i>Inclusive of get out</i>
Dry Hire (11pm - Midnight)	£5,000	
Dry Hire (Midnight onwards)	£7,500	Per hour

Saturday - Sunday

Starting from

Daytime Dry Hire (9am - 6pm)	£60,000	
Evening Dry Hire (6pm-11pm)	£20,000	<i>Inclusive of get out</i>
Dry Hire (11pm - Midnight)	£5,000	
Dry Hire (Midnight onwards)	£7,500	Per hour

RATE CARD

ADDITIONS

Not all charges apply; dependent on requirements of the event

Technical (only required for custom content)

Video (approved supplier Blue-i)	Quote following event spec
Staging (approved supplier Steeldeck)	Quote following event spec
Lighting (approved supplier White Light)	Quote following event spec
Audio (approved supplier Loh Humm)	Quote following event spec

Starting from		
Audio Tech Sessions - dependent on requirements (technician included) (7:30am - 9:30am)	£5,000	Est. Per session
Audio Tech Sessions - dependent on requirements (technician included) (7pm - 10pm)	£10,000	Est. Per session

Payment Terms:

50% deposit is due on confirmation of booking

Second payment of the remaining contract is due one week before the date of the event

Any final overages and extras will be invoiced 48 hours after the event (30 day terms)

Content Creation

Starting from

Venue integration support	£2,500	Per half day
Custom Content Creation (provided by approved 3rd party)		Quote following event spec

Food & Beverage

Starting from

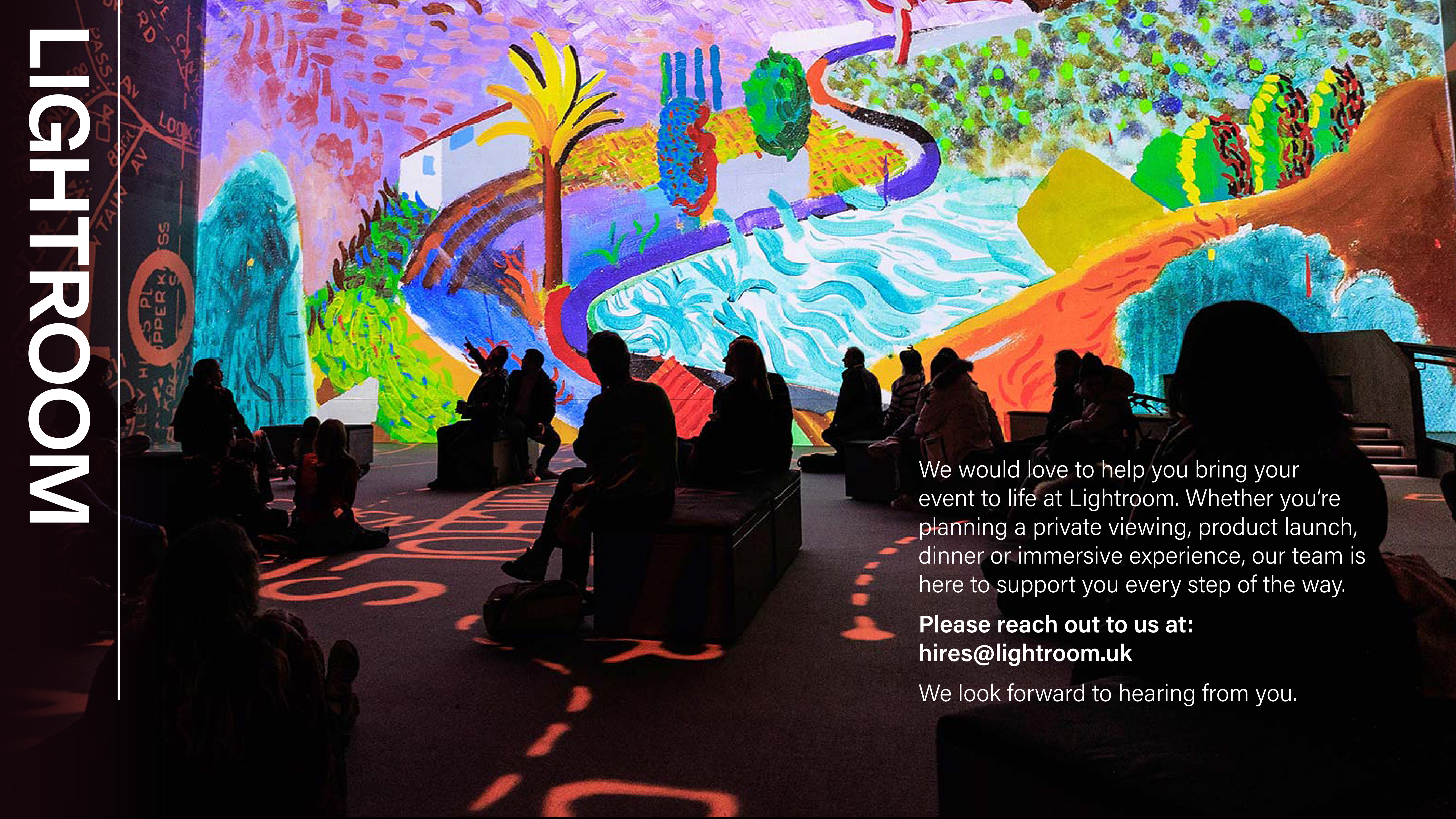
Drinks Reception	£5,000	Minimum Spend
Catering using a pre-approved supplier		Sample menu to follow

Cancellation Policy:

Deposit is not refundable, if the hirer decides to cancel their event.

Lightroom would be pragmatic around cases of force majeure and work with the hirer to move the event, or if not possible, would issue a refund.

LIGHTROOM



We would love to help you bring your event to life at Lightroom. Whether you're planning a private viewing, product launch, dinner or immersive experience, our team is here to support you every step of the way.

Please reach out to us at:
[hires@lightroom.uk](mailto: hires@lightroom.uk)

We look forward to hearing from you.